

# Island artists bring the great outdoors inside

## En plein air works open at AAN Friday

BY HADLEY ST. JOHN  
I&M Staff Writer

Other than their affiliation for painting in the open air (en plein air), Anne Butler, Diane Dicker and Victoria Harvey didn't attend the same school of thought when it comes to painting techniques.

With backgrounds varying from portraiture to intensive drawing, the artists have not traveled down the same path to get where they are today. The differences will be readily apparent at the Artists' Association of Nantucket this Friday with an opening reception of their work from 6 to 8 p.m.

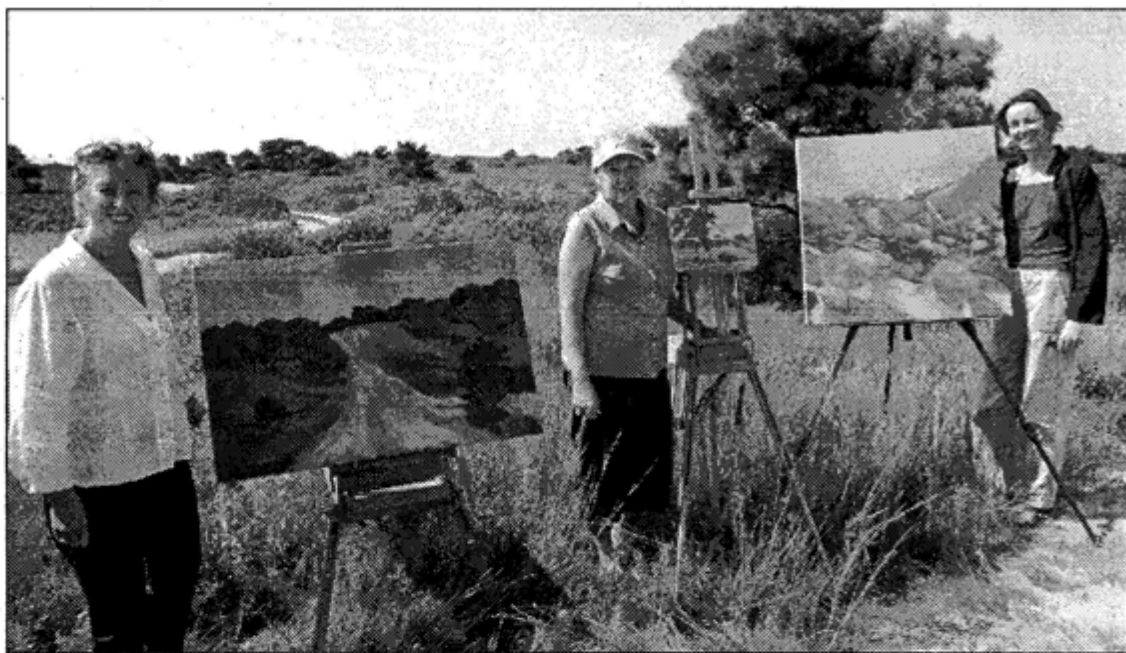


Photo by Nicole Harnishfeger

Standing with their easels in Maddequecham Friday are, from left, Anne Baldwin Butler, Victoria Harvey and Diane Dicker.

### Anne Butler

Anne Butler said she sometimes goes back two or three times to the same spot to finish a painting. The founder of Sketching Tours of Nantucket, a tour that incorporates drawing instruction and on-site work, Butler said she is used to schlepping her things around.

To do one painting of a grove of trees at Sanford Farm, Butler had to walk a quarter mile each way trailing her supplies behind her. "Getting my things out there was a task. I'd start turning a corner and everything fell off my cart," she said.

And Butler said she's considering going out to Sanford Farm a fourth time to get the light right.

"I find when I start reworking in the studio I lose what I gained out there," she said.

Butler added that her painting style is influenced by the time constraints outside – and her tight schedule. Some of her works have become more abstract.

"My style is evolving. What I'm trying to do is abstract my work a little more and work with color and light and form," she said.

One of Butler's strengths is her ability to work in different styles. When what had been a bright, clear landscape was suddenly enshrouded with fog one day, the artist improvised.

"I literally just wiped back all the clarity and brought in the fog. The path still showed but everything was muted."